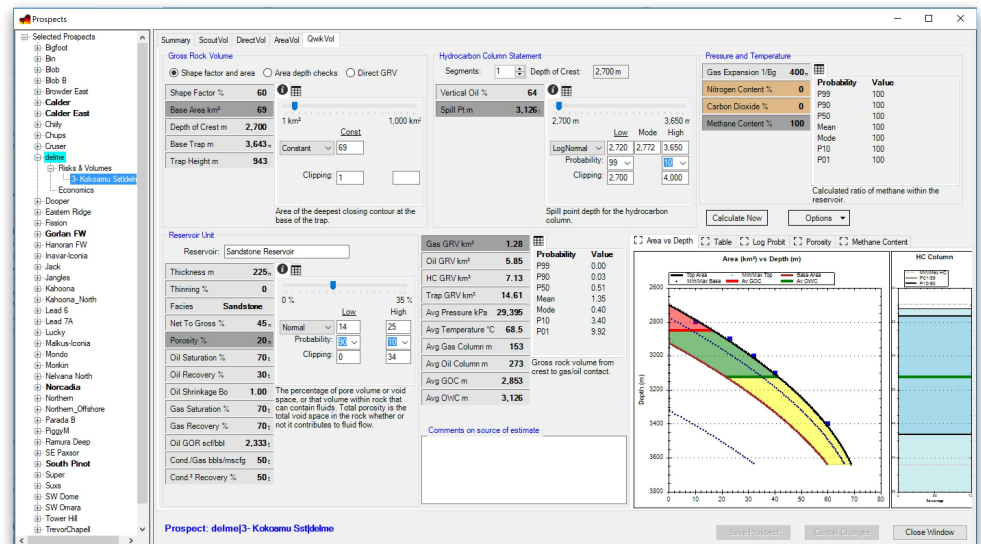




GIS PAX

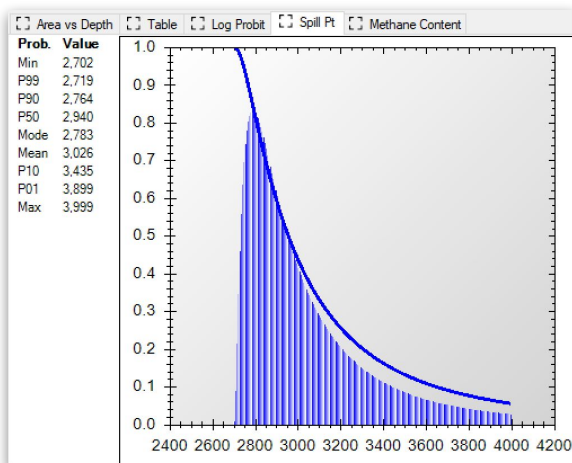
PLAYER[®] BRINGS RISK AND REWARD INTO ONE INTEGRATED ENVIRONMENT

GIS-pax recently released version 4.3 of the Player software which includes the latest update to our volumetric evaluation suite, QwikEval. Player is renowned as a tool of choice to bring all available data and interpretations together into fully integrated CRS (common risk segment) maps. The addition of the volumetric suite brings risk and reward together into one streamlined workflow. The QwikEval suite includes a probabilistic Monte



Carlo tool along with additional tools that can provide volumetric estimates based on areal yield of analogue discoveries and prospects or the ability to add volumes direct from scout information or 3rd party tools. The interface is specifically designed to be intuitive and reliable and will provide probabilistic volumes in a matter of minutes using industry standard methodology. Parameters are input using easy access 'sliders' and can be based on all standard distributions with dynamic histograms updating on the fly.

This integration of risk and reward into one package allows the impact of success at any prospect in the portfolio to be evaluated in



Column height statement histogram

terms of it's de-risking one or more play elements in other prospects, linked through the CRS maps. Portfolios can be viewed not only in terms of the largest individual opportunities but also the 'play openers', likely to have the largest impact on an overall risked portfolio. This linkage will drive strategy decisions, assist in VOI (value of information) assessments and can change a drill programme.

Additional new functionality added into Player 4.3 includes the ability to use metric, imperial or oilfield units in any combination and a re-design of the post well evaluation template to allow confidence, additional comments and assessment criteria to be added.

For Neflex® insights subscribers, we now also have ability to stream insights GDE maps directly into Player where they can be intelligently composited and form the basis for CRS map construction.

For more information contact Kelly Boucher at: kboucher@gis-pax.com

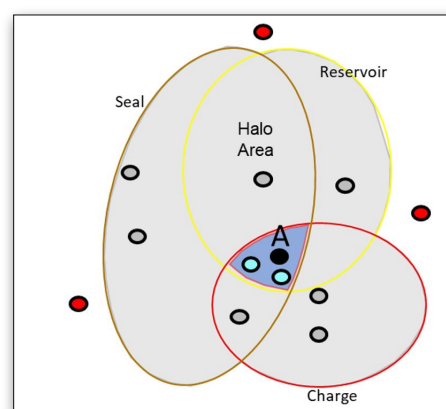
For a Player 4.3 download link contact: support@gis-pax.com



Assessing impact of success on a portfolio

With both risk and reward thoroughly integrated in Player, the impact of success on any prospect can be assessed in terms of how it de-risks other opportunities linked through the CRS polygons.

In the example below success at opportunity A will de-risk the blue prospects that are in the same composite CRS segment, will de-risk one or more play element of the grey prospects because they are located in the same reservoir, charge or seal polygons but have no impact on the red prospects which are located in risk polygons not linked to opportunity A.



When this process is undertaken for all opportunities in the portfolio, the prospects where success will have the largest overall impact on portfolio risked volumes (the play openers) can be easily identified.

