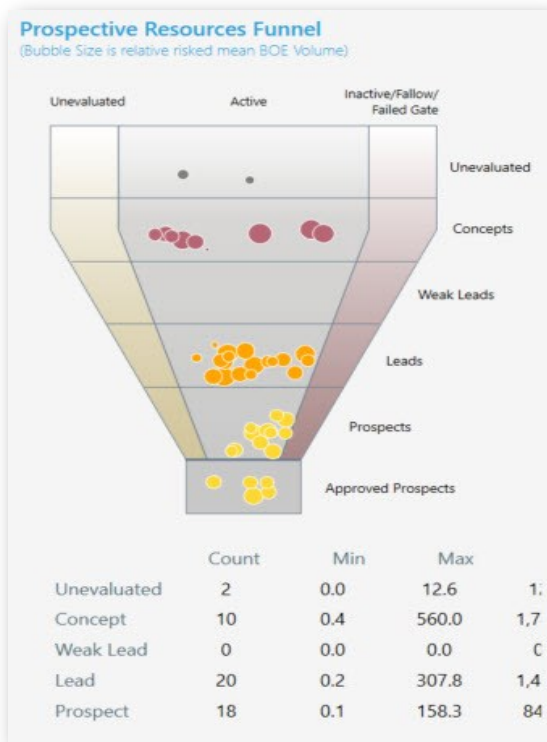




WANT TO SEE ALL YOUR PROSPECTS ON A MAP?

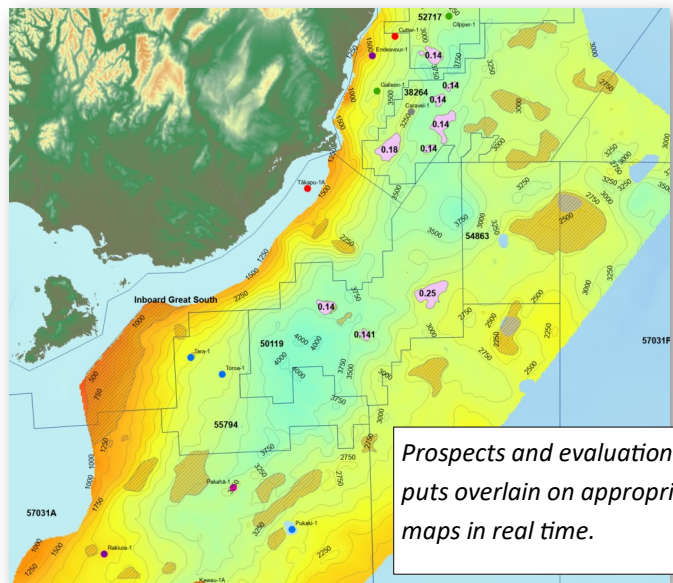
**QWIK EVAL—A VOLUMETRIC TOOL FOR ARCGIS, RISK &
REWARD ALL IN ONE PLACE!**

The QwikEval Suite— Get a trial of our MonteCarlo Stochastic prospect evaluation tool



Prospect Funnel (above): One view of the entire portfolio at all maturity levels.

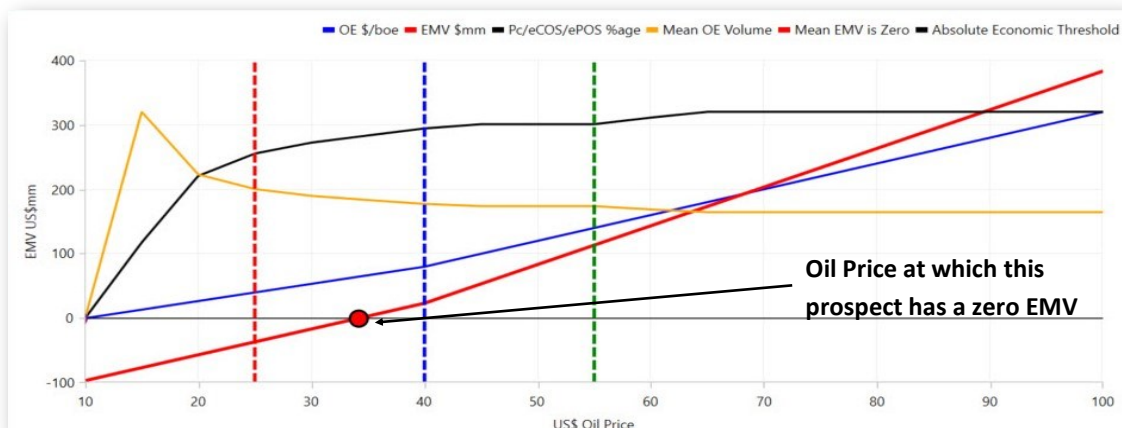
QwikEval is a spatially aware suite of volumetric tools designed to ensure any level of opportunity maturity can be captured, evaluated, and included in your portfolio. The tools allows you to simply add data produced in other volumetric tools, data from 3rd party sources or relevant publications, estimate volumes based on area yield of analogue populations, through to a fully stochastic, Monte Carlo evaluation which is comparable to and has been verified against the most sophisticated volumetric assessment tools commercially available today.



Prospects and evaluation inputs overlay on appropriate maps in real time.

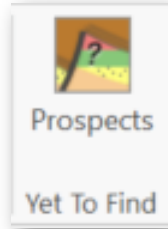
Prospect EMV vs oil price (below):

QwikEval has the ability to add multi-phase commercial cutoffs and a screening economics module that provides the EMV value of the prospect at every oil price between US\$10 to US\$100/boe. QwikVol has been designed to be easy and intuitive to use with minimal input interfaces and a transparent workflow. The results provide the geological and commercial volumetric distributions together with value at the full range of commodity prices.

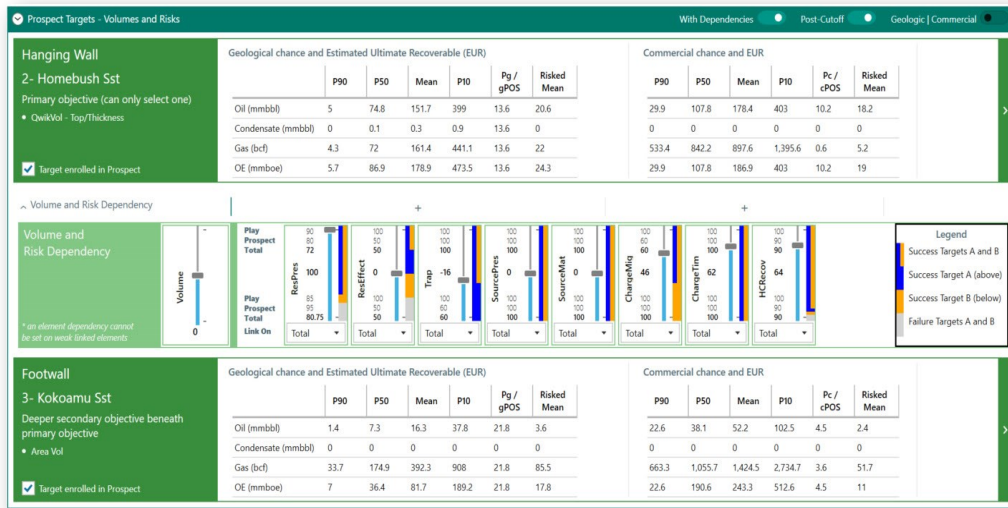


What's NEW in QwikEval for prospects??

- Capture volumes for any maturity level.
- Snapshot to visualise entire portfolio.
- Direct linkage to risk maps.
- See all prospects in their spatial context.
- Multi-target dependencies.
- Integration of confidence.



- Multi-phase commercial cut-offs.
- Stochastic multi-target aggregation.
- Screening economics.
- Economic results at range of oil prices.
- Understand impact of success on overall portfolio.



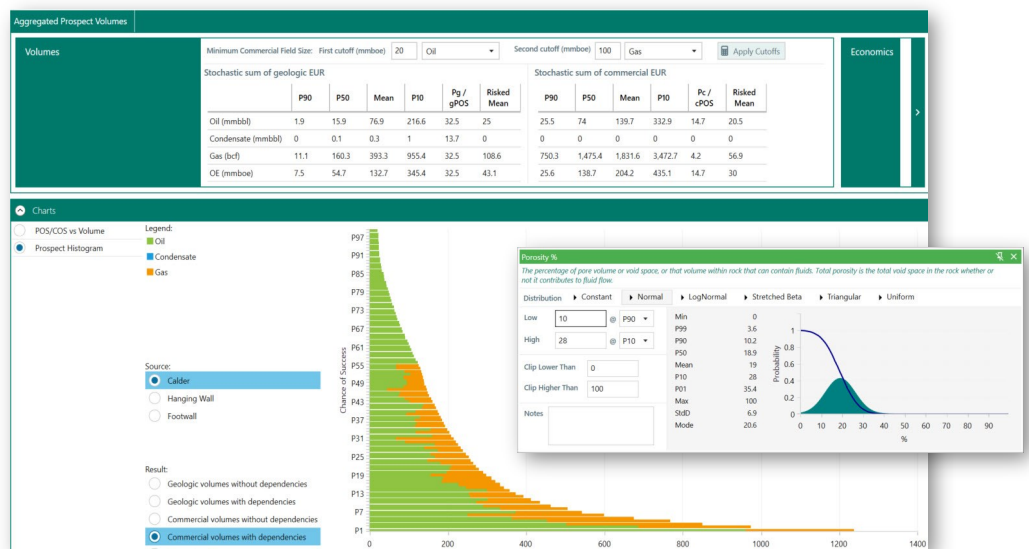
QwikVol is the stochastic volumetric tool within the QwikEval suite and provides the ability to include dependencies between targets with an intuitive visual interface clearly showing the impact of the dependencies on results (left) and the ability to include multi-phase commercial cutoffs (below).

To all our Players:

NOTE you must be able to run both **ArcMap** and **ArcGIS Pro** for this initial trial of QwikEval.

If you decide to proceed with the volumetric tool starting **early Q1 2022** we will have a full standalone version of QwikEval Spatial for just ArcGIS Pro.

(ie. Q1 2022 You will no longer need ArcMap).



System Requirements

QwikEval is an extensions to ArcGIS Pro. **FOR THIS TRIAL** you need to have **BOTH ArcGIS Pro and ArcMap**. This is supported on Windows 10 for the following Esri releases: ArcGIS Desktop 10.4 to 10.8 & ArcGIS Pro 2.6 to 2.8

For more information or to request a QwikEval TRIAL license please contact

Kelly Boucher: KBoucher@gis-pax.com