



**GIS
PAX**

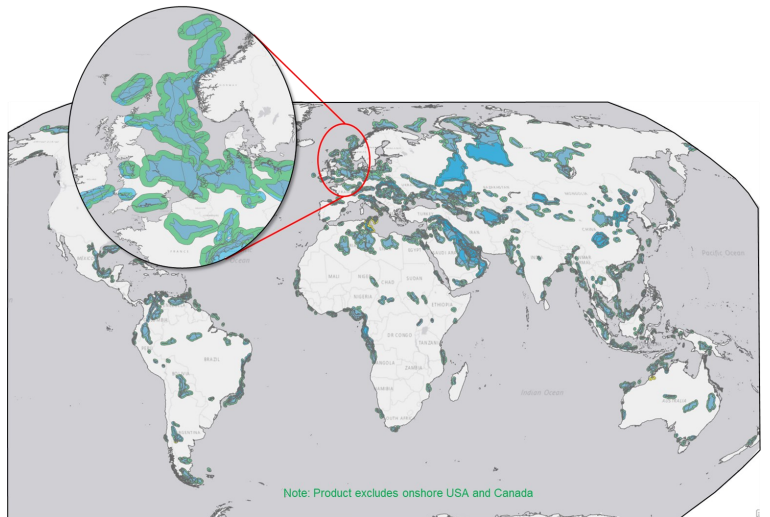


IHS Markit®

PORTFOLIO OPPORTUNITY RANKER NOW AVAILABLE

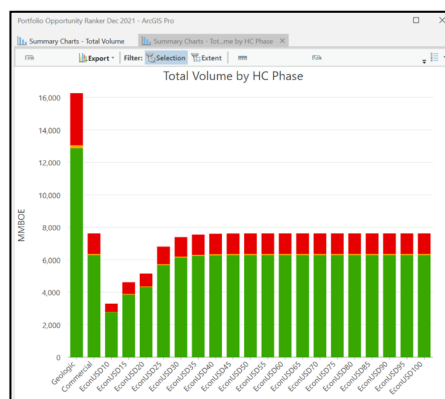
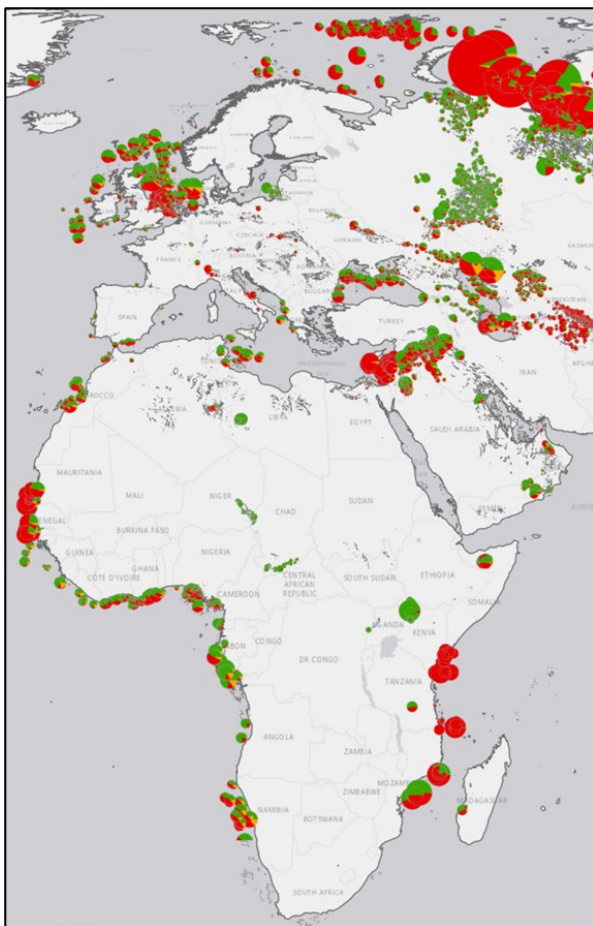
A unique collaboration between GIS-pax and IHS Markit provides an evaluation of the remaining hydrocarbon resources of the planet. This Global YTF project sits on a spatial platform, is fully editable and uses the GIS-pax Player software with IHS Markit E&P data only. No other vendor subscription is required, this unique offering is now available.

The Portfolio Opportunity Ranker product provides a holistic review of global yet to find (YTF). The entire world has been divided into proven hydrocarbon provinces which are then subdivided based on bathymetry/elevation, distance to infrastructure and fiscal terms. Commercial cutoffs have been set for each of these segments allowing the remaining commercial volumes to be estimated and these are then valued at every oil price between US\$10 and US\$100/bbl.



Commercial evaluation polygons

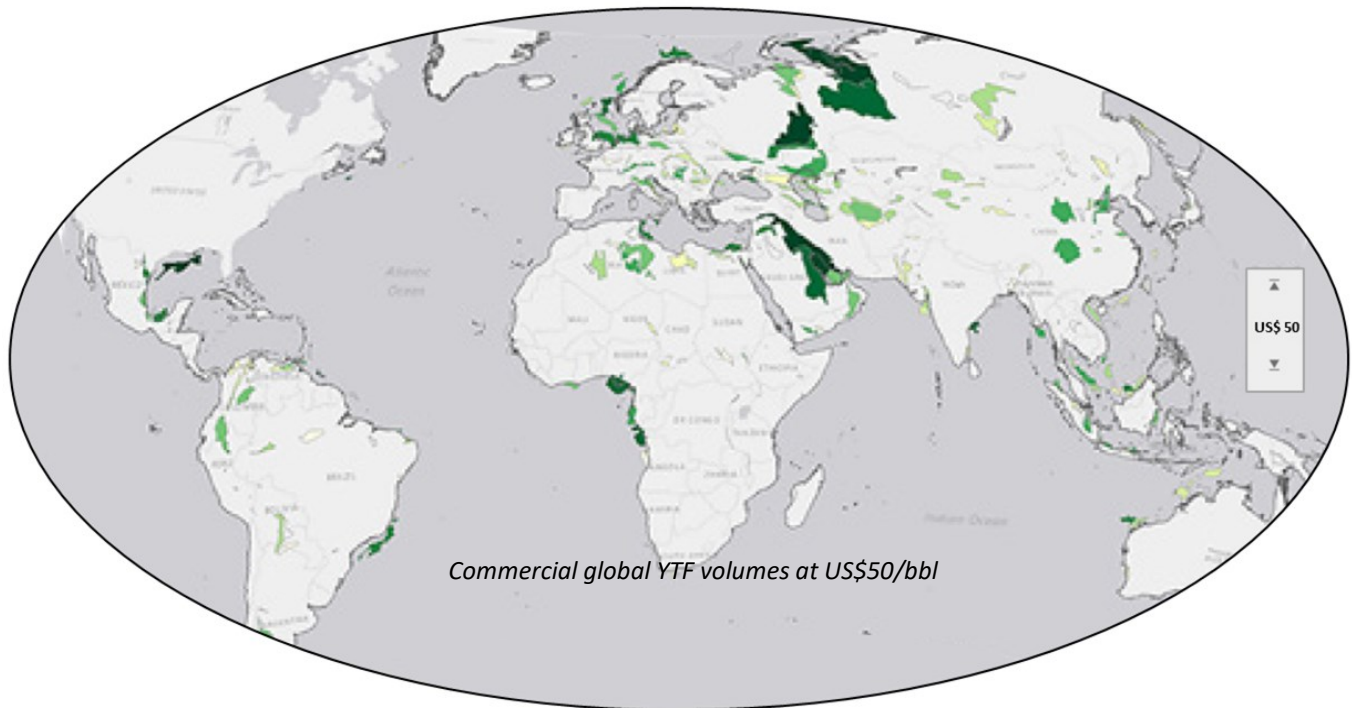
Over 21,000 leads and prospects from the IHS database have been evaluated for volumes and linked to a global risk map to deliver risked volumes. A novel and unique approach is then applied to predict the remaining unidentified prospectivity based on basin exploration history, geological complexity and machine learning.



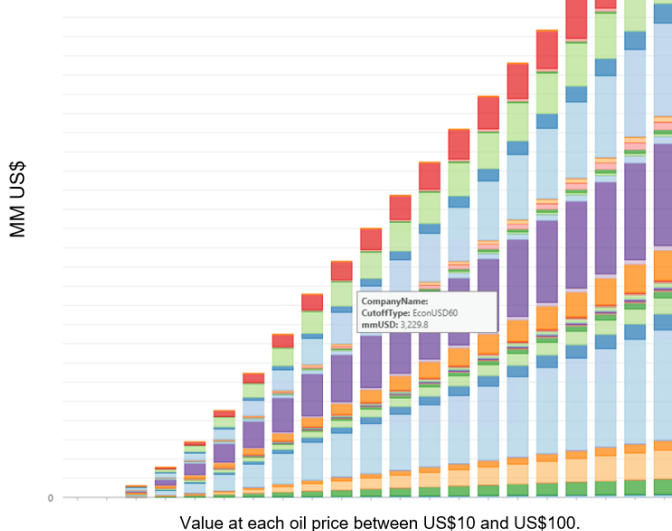
Any group of polygons can be selected to display the geological and commercial YTF at every oil price between US\$10 and US\$100

There is no comparable product available that provides a customisable view of the remaining hydrocarbon potential of the planet.

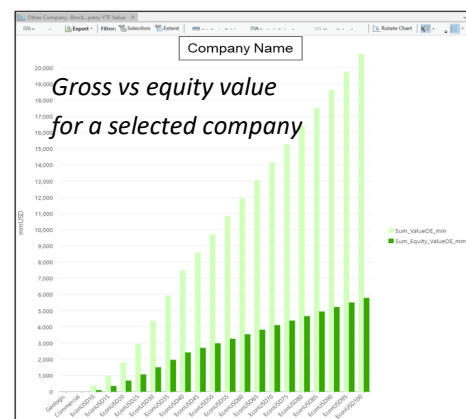
YTF results are displayed on a global map and an intuitive slider interface allows the user to change the oil price assumption and immediately see the impact on the map. This allows users to view their companies portfolio in this global context and identify areas of the world more resilient to volatile commodity prices.



Value by company equity at every oil price between US\$10 and US\$100/bbl



Any area on the map can be selected to view the YTF volumes and value for all companies active in that area, any companies net versus gross equity entitlement volumes and value providing important benchmark data for M&A evaluations or comparing your own portfolio against competitors in the region.



Key elements of Portfolio Opportunity Ranker are the transparent workflow and the ability for users to substitute their own prospects & economic parameters and re-run the evaluation to provide a customised company specific project & global view of their portfolio.



For enquiries or a **live demo of Portfolio Opportunity Ranker** contact:
Kelly Boucher (kboucher@gis-pax.com) or James Veron (james.veron@ihsmarkit.com)

For more info please visit: [Portfolio Opportunity Ranker | IHS Markit](#)

