



GIS PAX

GIS packages for exploration success



PLAYER

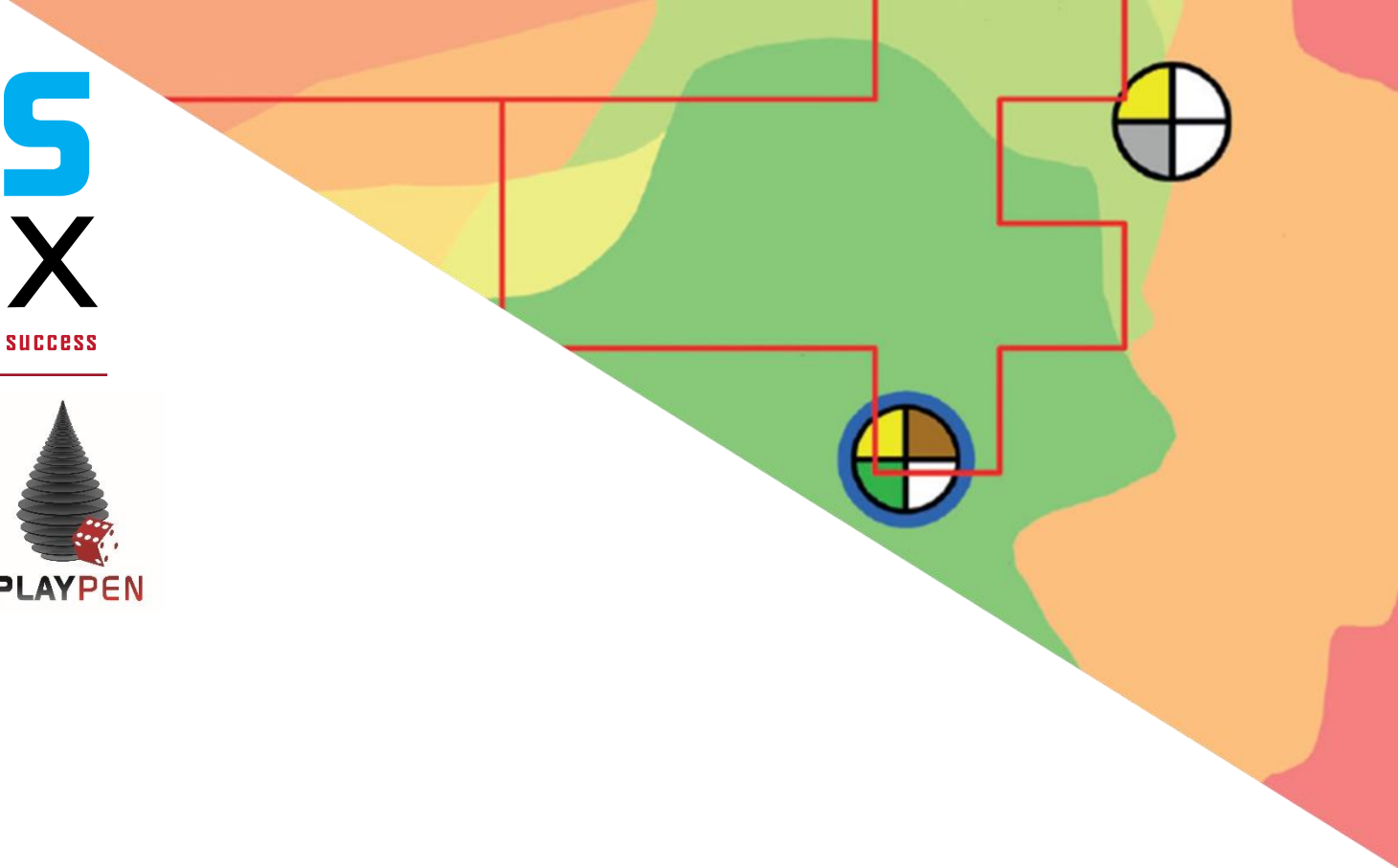


PLAYHOUSE



PLAYPEN

PlayStarter



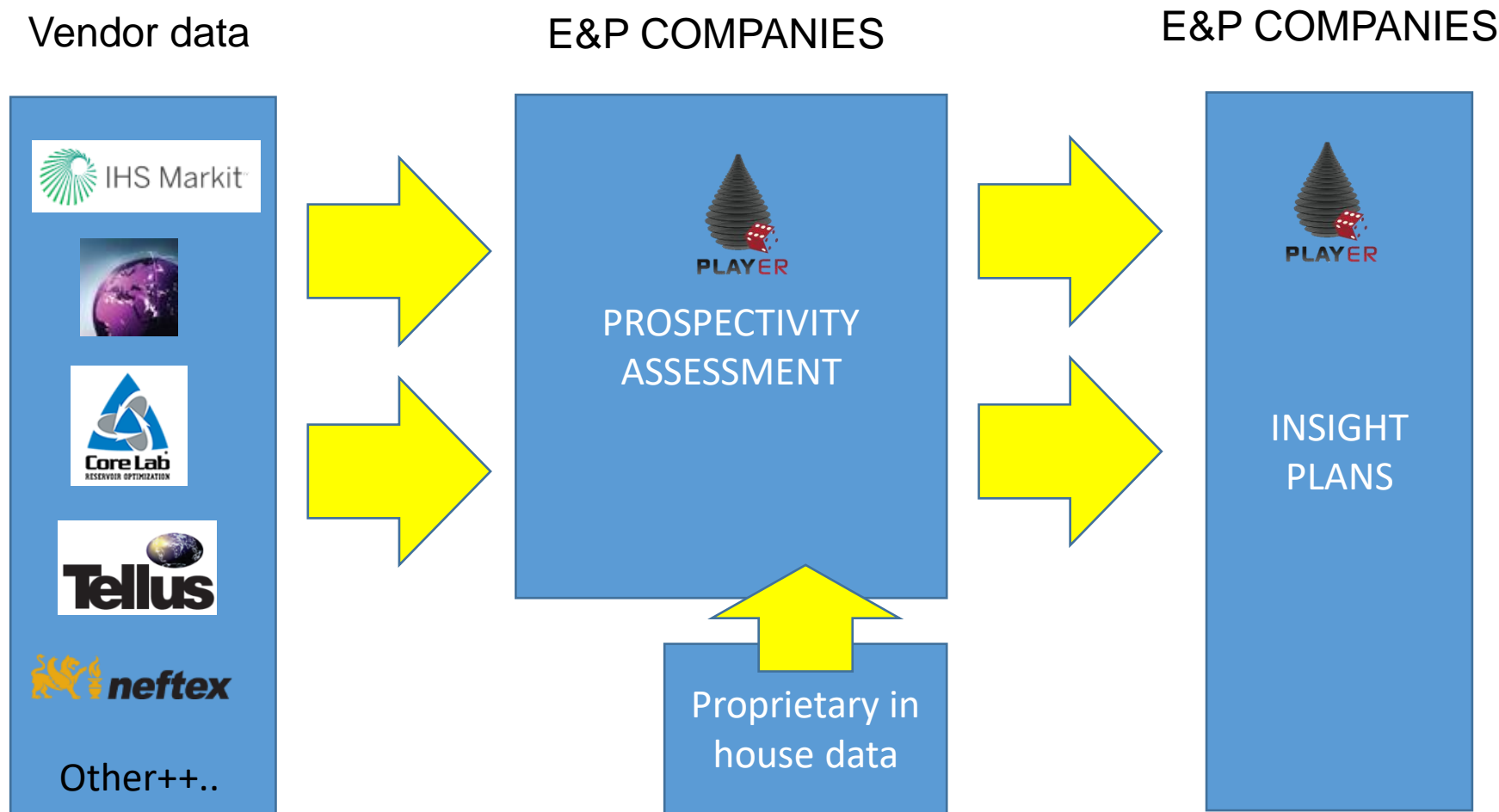


Summary

- All exploration and new business teams are thin on resources due to staff and budget cuts in a US\$50/bbl world
- Companies subscribe to expensive 3rd party products but limited resources mean they are not extracting full value from these significant investments.
- We are now offering a service to integrate whatever **third party** data you have into a Player project
 - This will **NOT** cover proprietary data which will be added by company specialists after the project has been delivered to the customer
- The evaluation of this integrated product by company geologists will ensure they can focus their limited resources on the inclusion of proprietary data and spend more time on the evaluation of the data rather than initial integration of the datasets and building projects. All proprietary data and subsequent prospect and value analyses will be then be automatically within a robust regional context.



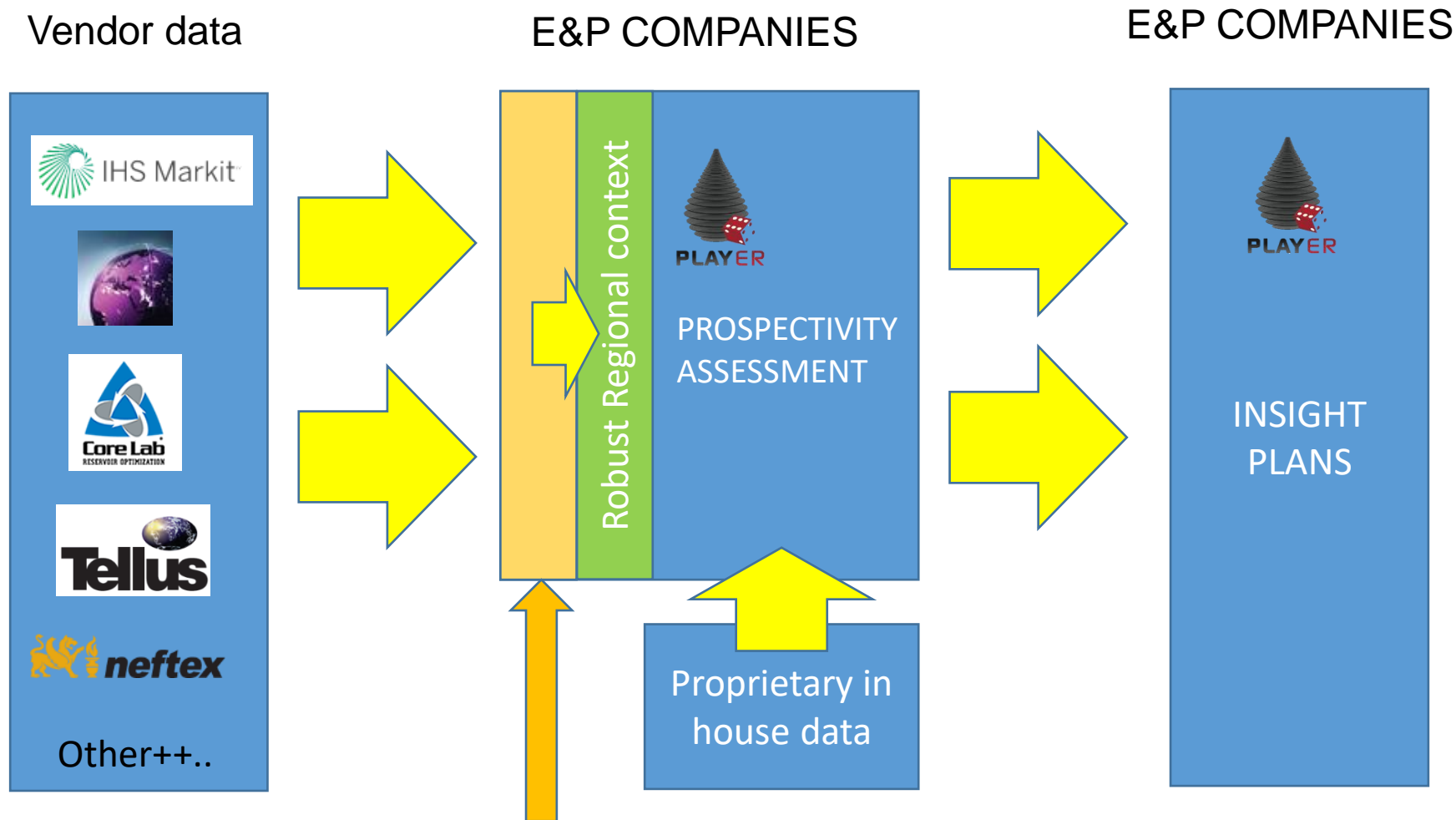
Current Situation



Data supplied then all assessments done by company staff– Player licenced by E&P companies to integrate this data



Suggested Service Model



Initial integration of vendor data done as a service by GIS-pax on a consulting model
No proprietary data integrated



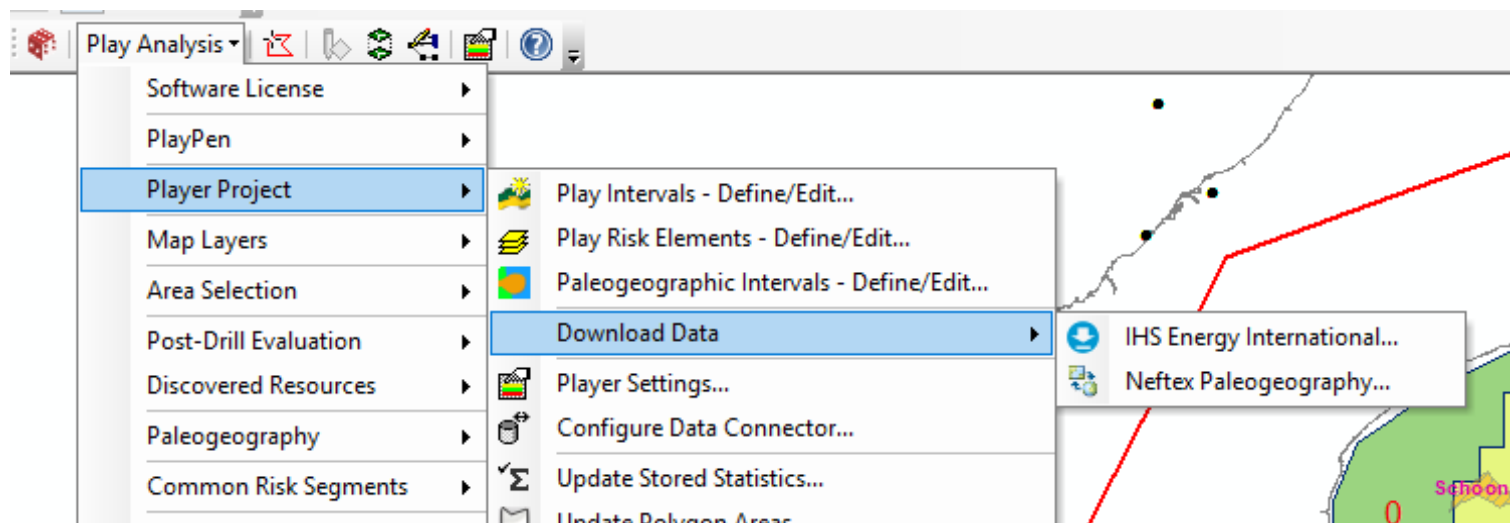
Example

- Your new business evaluation team is asked to evaluate offshore Argentina because there is a bid round
- They buy a vendor seismic dataset then map leads and prospects and rush to a bid deadline with limited resources not efficiently using the expensive vendor datasets that you already subscribe to.
- The alternative is... send GIS-pax the vendor datasets with your selection of play intervals and we integrate the data for you quickly and give you back a fully integrated product
 - We do this in a smart way eg if your “upscaled” Neftex GDE map that we make from raw Neftex data conflicts with the IHS pool depositional facies data we can make some sensible edits to make the datasets consistent..
- Your geologists can then integrate post well analyses and other key datasets quickly within a regional framework placing all opportunities in the area into a regional context instantly
 - Your geologists “own” the evaluation... but begin work from a higher starting point.
- Your geologists focus their resources on the value adding aspects of the evaluation.



Advantages

- This is what we (GIS-pax) do.. we have built tools in Player to quickly integrate many of the existing vendor datasets



- No-one else can do this work as efficiently as us. We will deliver it into a Platform that geologists can easily edit and evergreen.
- This frees up your resources to focus on the key high value evaluation details and maximises the usage of your expensive subscription datasets.



Legal issues/Contacts

- This work is just for your company – we cannot show or even discuss it with other customers – it’s a traditional contractor model helping you with **your** datasets.
- All confidential.
- Enquire for a quote and we can quote day rate or fixed project price once we know what the scale/complexity of the project is.
 - Eg we could do “West Africa” or “South America” or “Brazil” or “Offshore Mexico” projects which could be large depending what vendor datasets you choose to supply..
- Contact Kelly Boucher at kboucher@gis-pax.com (Global Sales and Marketing) or Principal Geologist Paul Ventris at pventris@gis-pax.com if you want to discuss more details..