



GIS PAX

PLAYER[®] IS GOING PRO

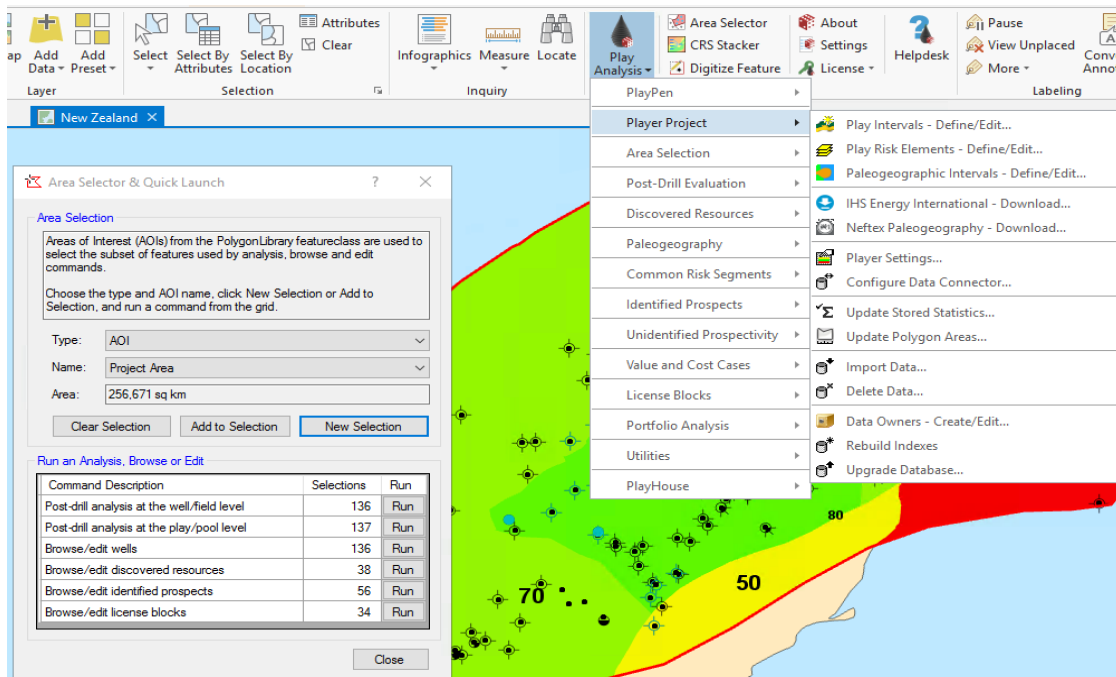
Player for ArcGIS Pro. The next major release of Player is due November 2018.

Player 5.0 will be a major change as it will be the first release to support ArcGIS Pro. It will also contain all the functionality of the latest ArcMap release due at the same time—Player 4.4.

All project data from well evaluations to prospect volumes will be available in both ArcGIS Pro, and ArcMap, on the same machine. So whether your organisation is going Pro now or cautiously dipping their toes, your Player workflow will remain the same.

We've kept the same Play Analysis menu with its easy top down workflow, all dialogs will look the same and you will find everything where you expect—no starting over! Moving to ArcGIS Pro will be full of challenges for many companies but we are making the Player transition as seamless as possible.

Get ready for 64-bit multi-threaded Pro.



For information on Player migrating to ArcGIS Pro or for help on any Player project please contact our support team: support@gis-pax.com
Please note that we will support and maintain both Player for ArcMap and Player for ArcGIS Pro until June 2019.

After June 2019 we will only be developing on ArcGIS Pro. Player for ArcMap and ArcPro will both be supported as per usual.